

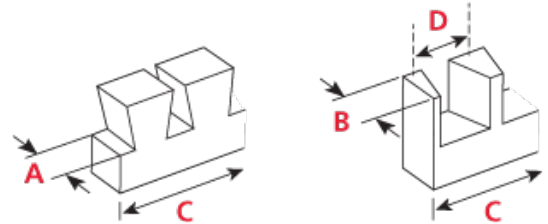
Leigh Super Jigs Technical Specifications

CAPACITIES

Through Dovetails

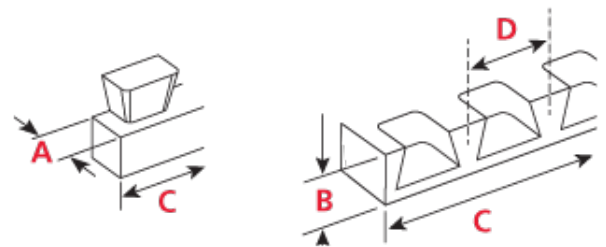
	MIN	MAX
A Tail Board Thickness	1/8" [3mm]	1" [25.4mm]*
B Pin Board Thickness	1/8" [3mm]	13/16" [20.6mm]
C Board Width	7/8" [22mm]	24" [610mm] (S24) 18" [457mm] (S18) 12" [305mm] (S12)
D Pin Centers	7/8" [22mm]	

* 1-1/4" [32mm] with 2-step process



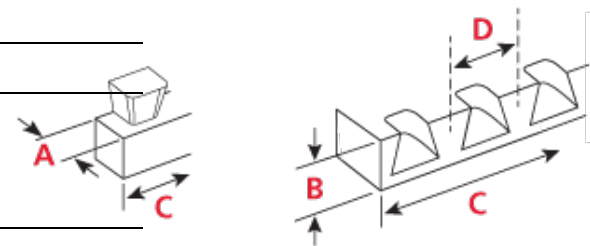
Half-Blind Dovetails

	MIN	MAX
A Tail Board Thickness	1/4" [6mm]	1" [25mm]
B Pin Board Thickness	7/16" [11mm]	1" [25mm]
C Board Width	7/8" [22mm]	24" [610mm] (S24) 18" [457mm] (S18) 12" [305mm] (S12)
D Pin Centers	7/8" [22mm]	



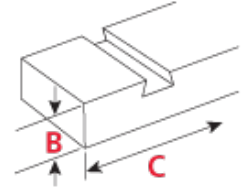
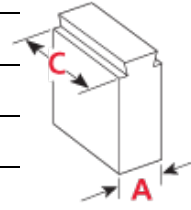
Single Pass Half-Blind Dovetails

	MIN	MAX
A Tail Board Thickness	1/4" [6mm]	1" [25mm]
B Pin Board Thickness	9/32" [7mm]	1" [25mm]
C Board Width	7/8" [22mm]	14" [356mm] (S24) 11-3/8" [289mm] (S18) 8-3/4" [222mm] (S12)
D Pin Centers	7/8" [22mm]	7/8" [22mm]



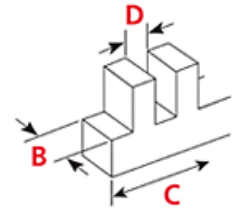
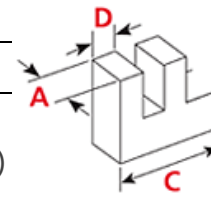
Sliding Dovetails

	MIN	MAX
A Tail Board Thickness	1/4" [6mm]	1" [25mm]
B Socket Board Thickness	9/32" [7mm]	1" [25mm]
C Board Width	2-3/16" [55mm]	24" [610mm]



Box Joints (Finger Joints)

	MIN	MAX
A Pin Board Thickness	1/8" [3mm]	1" [25mm]
B Socket Board Thickness	1/8" [3mm]	1" [25mm]
C Board Width	29/32" [23mm]	21-5/16" [541mm] (S24) 17-13/32" [442mm] (S18) 11-3/8" [289mm] (S12)
D Pin and Socket Sizes	5/16" (8mm) 5/8" (15.9mm)	



JIG SIZE

	SUPER12	CARTON
Length:	21" (534mm)	25-1/2" (648mm)
Height:	9" (230mm)	8-1/8" (210mm)
Depth:	11" (279mm)	8-3/4" (223mm)
Weight:	11 lbs. (5 kg)	14 lbs. (7 kg)

	SUPER18	CARTON
Length:	27" (686mm)	31-3/8" (797mm)
Height:	9" (230mm)	8-1/8" (210mm)
Depth:	11" (279mm)	8-3/4" (223mm)
Weight:	12.6 lbs. (5.7 kg)	17 lbs. (8 kg)

	SUPER24	CARTON
Length:	33" (839mm)	37-1/4" (947mm)
Height:	9" (229mm)	8-1/8" (210mm)
Depth:	11" (279mm)	8-3/4" (223mm)
Weight:	14.25 lbs. (7 kg)	20 lbs. (9 kg)

STANDARD JOINERY

Variably Spaced Through Dovetails
Variably Spaced Half-Blind Dovetails
Single Pass (fixed spaced) Half-Blind Dovetails
Sliding Dovetails
Rabbeted Half-Blind Dovetails
Finger (Box) Joints, 5/16" and 5/8"
Inlaid Through Dovetails
End-on-End Dovetails

Asymmetrical Joints (Through and Half-Blind)
Simple Angle Joints
Needle Pins

With Optional Templates:

Finger (Box) Joints, 10 sizes
Isoloc Joints, 4 patterns